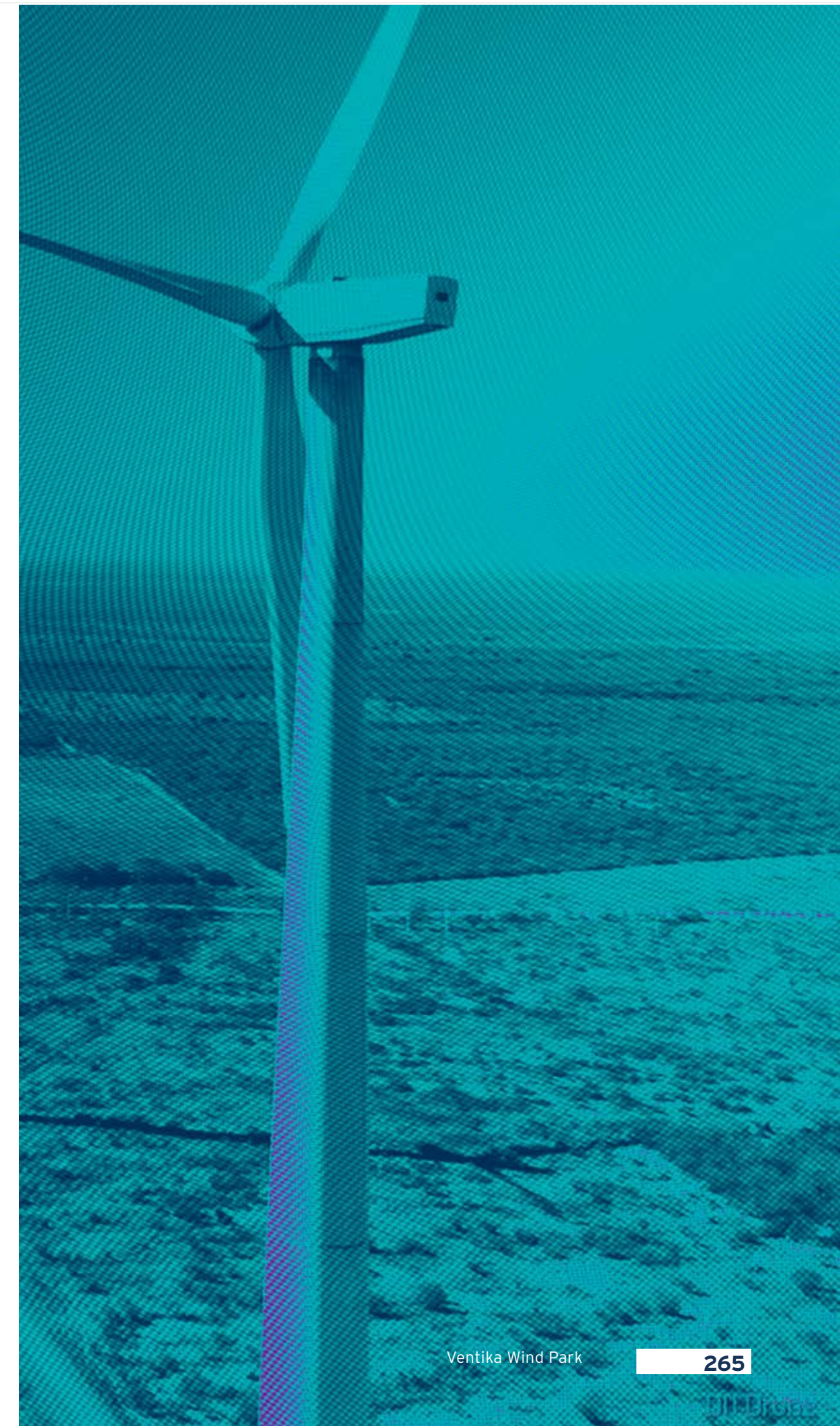


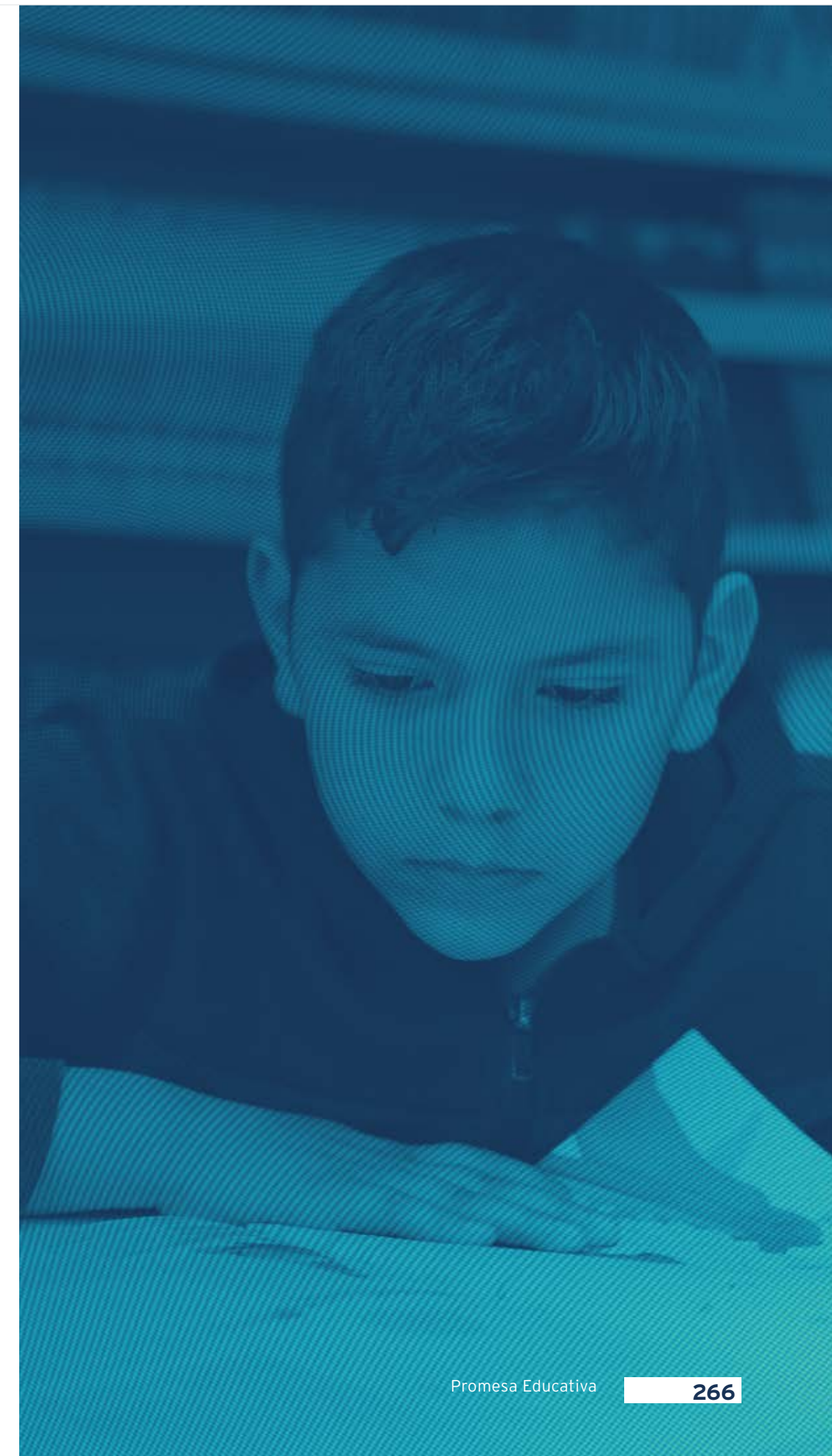
► GLOSSARY AND FORMULAS

Aguaprieta Pipeline or GAP	System which consists of 13 km of a 20-inch diameter pipeline and a design capacity of 200 mmcf (2.1 mmthd), located in the state of Sonora.
AMCHAM	American Chamber of Commerce, Mexico.
AMDEE	Mexican Wind Energy Association (Asociación Mexicana de Energía Eólica).
AME	Mexican Energy Association (Asociación Mexicana de Energía).
AMGN	Mexican Association of Natural Gas (Asociación Mexicana de Gas Natural).
ASEA	Safety, Energy, and Environment Agency (Agencia de Seguridad, Energía y Ambiente).
ASOLMEX	Mexican Association of Photovoltaic Solar Energy (Asociación Mexicana de Energía Fotovoltaica).
Baja Refinados Terminal	Refined products storage terminal, located in Baja California, currently under construction. The project will have a capacity of approximately 1,000,000 bl.
BMV	Mexican Stock Exchange (Bolsa Mexicana de Valores).
Border Solar	Photovoltaic solar power plant with a 150 MWAC capacity, located in Ciudad Juárez, Chihuahua.
BP	BP plc., and its subsidiaries, formerly British Petroleum. An energy company mainly in oil and natural gas.
Carbon Dioxide Equivalent	A measurement used to compare several greenhouse gas emissions based on their global warming potential.
CCE	Business Coordinating Council (Consejo Coordinador Empresarial).
Cemefi	Mexican Center for Philanthropy (Centro Mexicano para la Filantropía).
CEMEX	Cemex, S.A.B. de C.V., and subsidiaries.
CENACE	National Energy Control Center (Centro Nacional de Control de Energía).
CENAGAS	National Natural Gas Control Center (Centro Nacional de Control de Gas Natural).
CFE	Federal Electricity Commission (Comisión Federal de Electricidad).
CH ₄	Methane.
Chevron	Chevron Combustibles de México, S. de R.L. de C.V.
CO ₂	Carbon Dioxide.
COFECE	Antitrust Commission (Comisión Federal de Competencia Económica).
Coparmex	Employers Confederation of the Mexican Republic (Confederación Patronal de la República Mexicana).
CRE	Energy Regulatory Commission (Comisión Reguladora de Energía).
DACGs	General Administration Stipulation (Disposición Administrativa de Carácter General).
DeAcero	DeAcero, S.A.P.I. de C.V., and subsidiaries.
DEN	Ductos y Energéticos del Norte, S. de R.L. de C.V., was a joint venture between IEnova and Pemex TRI until November 2017.
Don Diego Solar	Solar power plant with a 125 MWAC capacity, located in the municipality of Benjamín Hill in the state of Sonora.





EBITDA	Earnings Before Taxes, Depreciation, and Amortization.
ECA LNG or ECA Liquefaction	ECA LNG Holdings B.V., and subsidiaries.
ECOGAS	ECOGAS México, S. de R.L. de C.V., the company's natural gas distribution business.
Energía Costa Azul or ECA	Energía Costa Azul, S. de R.L. de C.V., and subsidiaries.
Energía Sierra Juárez or ESJ	Energía Sierra Juárez, S. de R.L. de C.V., a wind park with a 155 MW capacity, located in Baja California. The second stage of the wind park is currently under construction, and it will have a 108 MW capacity. This was a joint venture between the company and Actis, which ended on March 19th, 2021.
ESJ Expansion	The goal of the Energía Sierra Juárez expansion project is to increase ESJ's current capacity by installing 26 wind turbines with a 108 MW capacity.
Ethane Pipeline	A three-segment 224 km pipeline with a transportation capacity of up to 52 mmcf (0.6 mmthd) in the first segment; approximately 152 mmcf (1.8 mmthd) in the second segment—both for transporting ethane gas—and approximately 106,000 bpd (3.1 mmthd) in the third segment for transporting ethane from Pemex's processing facilities in the states of Tabasco, Chiapas, and Veracruz to the Ethylene XXI ethylene and polyethylene polymerization facility in the state of Veracruz.
FCPA	Foreign Corrupt Practices Act.
FEMSA	Fomento Económico Mexicano, S.A.B. de C.V.
FTSE	Financial Times Stock Exchange.
Gasoductos de Chihuahua or GdC	Gasoductos de Chihuahua, S. de R.L. de C.V., a company in which IEnova was partners with Pemex TRI until September 26, 2016. The name Gasoductos de Chihuahua has been changed to IEnova Pipelines.
Gazprom	Gazprom Marketing & Trading México, S. de R.L. de C.V.
GHG	Greenhouse Gas Emissions.
GJ	Gigajoules.
GPTW	Great Place to Work (program that ranks the best companies to work for).
GRI	Global Reporting Initiative.
GR	Rosarito Pipeline.
GRO Expansion	Pipeline under construction that is part of the Rosarito Pipeline, which is approximately 200 km long and includes a compression station of approximately 60,000 installed horsepower.
Guadalajara Terminal	Refined products storage terminal located in the state of Jalisco, currently under development.
Guaymas-EI Oro Pipeline	Second segment of the Sonora Pipeline, which consists of approximately 330 km of a 30-inch diameter pipeline spanning the states of Sonora and Sinaloa, with a transportation capacity of 510 mmcf (5.3 mmthd) and a compression station with 33,300 installed horsepower.
GW	Gigawatts.
GWh	Gigawatts-hour.
HP	Horsepower.
HR Ratings	HR Ratings de México S.A. de C.V., a securities ratings agency.
ICC	International Chamber of Commerce-Mexico Chapter.
IEnova	Infraestructura Energética Nova, S.A.B. de C.V.
IEnova Marketing	IEnova Marketing, S. de R.L. de C.V.
IFC	International Finance Corporation, member of the World Bank.



IMEF	Mexican Institute of Financial Executives (Instituto Mexicano de Ejecutivos de Finanzas).
INECC	National Institute of Ecology and Climate Change (Instituto Nacional de Ecología y Cambio Climático).
IPC	Index of the Mexican Stock Exchange (Índice de Precios y Cotizaciones).
ISME	International Society for Mexico Energy.
ISO	International Organization for Standardization.
ISS	Institutional Shareholder Services.
km	Kilometers.
kW	Kilowatts.
kWh	Kilowatts-hour.
Liverpool	El Puerto de Liverpool, S.A.B. de C.V.
LMV	Mexican Securities Market Law (Ley del Mercado de Valores).
LNG	Liquefied Natural Gas.
LNG Terminal or ECA	An LNG storage terminal with a capacity of 320,000 m ³ (73.3 mmth) in two tanks, each with a capacity of 160,000 m ³ (36.6 mmth), with a regasification capacity of 1,300 mmcf (13.5 mmthd), or a nominal capacity of 1,000 mmcf (10.4 mmthd), located in Ensenada, Baja California.
Los Ramones I Pipeline	Pipeline which consists of approximately 116 km of a 48-inch diameter pipeline, two compression stations with a combined capacity of 123,000 horsepower installed and a natural gas transportation capacity of 2,100 mmcf (21.8 mmthd). It runs from the border between the state of Tamaulipas and the U.S. to the interconnection points with the Los Ramones Norte Pipeline in the state of Nuevo León.
Los Ramones Norte Pipeline	A joint venture with Brookfield, this pipeline consists of approximately 452 km a 42-inch diameter pipeline, two compression stations with a combined capacity of 123,000 horsepower installed and a natural gas transportation capacity of 1,420 mmcf (14.8 mmthd). It runs from the interconnection points with the Los Ramones I Pipeline in Los Ramones, in the state of Nuevo León, to the interconnection point with the Los Ramones Sur Pipeline in the state of San Luis Potosí.
LPG	Liquefied Petroleum Gas.
LPG Terminal in Guadalajara	An 80,000 bl (4.4 mmth) LPG storage facility, located in the state of Jalisco.
LTAR	Lost Time Accident Rate = Number of accidents x 200,000/hours worked.
Manzanillo Terminal	Refined products storage terminal, located in the state of Colima, that is currently under construction, with a storage capacity of 2,180,000 bl. The project will be developed as a joint venture with Trafigura.
mmbbl	Millions of barrels.
mmbld	Millions of barrels daily.
mmcf	Millions of cubic feet daily.
mmcf	Millions of cubic feet.
mmth	Millions of therms.
mmthd	Millions of therms daily.
Mtpy	Millions of tons per year.



MSCI	Morgan Stanley Capital International.
MW	Megawatts.
MW _{AC}	Megawatts, alternate current.
N ₂ O	Nitrous oxide.
Naco Compression Station	A 14,300-horsepower natural gas compressor installed on CENAGAS's Naco-Hermosillo pipeline in Naco, Sonora.
NOM	Official Mexican Standard (Norma Oficial Mexicana).
NO _x	Nitrogen oxides.
OHSAS	Occupational Health and Safety Assessment Series.
Ojinaga-El Encino Pipeline	Pipeline which consists of approximately 220 km of a 42-inch diameter pipeline with a natural gas transportation capacity of 1,356 mmcf (14.1 mmthd), located in the state of Chihuahua.
Operating Unit or Business Unit or Asset	Refers to IEnova's companies currently operating in the Gas and Power business segments.
Pemex	Petróleos Mexicanos.
Pemex TRI	Pemex Transformación Industrial, previously Pemex Gas y Petroquímica Básica.
Pima Solar	Photovoltaic solar power plant located in Caborca, Sonora with a capacity of 110 MWAC.
PROFEPA	Federal Environmental Protection Agency (Procuraduría Federal de Protección al Ambiente).
PROFOI	IEnova Operators Training Program (Programa de Formación de Operadores IEnova).
Puebla Terminal	Refined products storage terminal located in Puebla, currently under construction. The project will have a capacity of approximately 650,000 bl.
Ramal Empalme Pipeline	Pipeline of 20 km which consists of a 20-inch diameter pipeline with a natural gas transportation capacity of 226 mmcf (2.4 mmthd), located between Empalme and Guaymas and is part of the Sonora Pipeline.
RC Energía	Joint Venture between Rainbow Energy Marketing Corporation and Grupo CLISA.
Rosarito Pipeline	Pipeline which consists of three segments of approximately 302 km in aggregate length, including the 30-inch diameter Rosarito Mainline with a natural gas transportation capacity of approximately 534 mmcf (5.6 mmthd), the 42-inch diameter LNG Spur with a capacity of approximately 2,600 mmcf (27.0 mmthd), and the 12-inch diameter Yuma Lateral with a capacity of 190 mmcf (2.0 mmthd). Located in Baja California, it also includes two 32,760 horsepower compression stations.
Rumorosa Solar	Photovoltaic solar power plant with a capacity of approximately 44 MWAC, located in the state of Baja California.
S&P/BMV Total Mexico ESG Index	New name of the sustainability index of the Mexican Stock Exchange.
Samalayuca Pipeline	Pipeline which consists of approximately 37 km of a 24-inch diameter pipeline with a capacity of 400 mmcf (4.2 mmthd). It runs from Ejido San Isidro, Chihuahua, to the CFE's Samalayuca power plant and interconnects with a separate 16-inch diameter pipeline that is wholly owned by Pemex TRI, which runs from Ciudad Juárez to Chihuahua.
San Fernando Pipeline	Pipeline which consists of approximately 114 km of a 36-inch diameter pipeline, with a maximum daily transportation capacity of 1,000 mmpcd (10.4 mmthd) and a compression capacity of 1,460 mmcf (15.2 mmthd), as well as two compression stations with an aggregate of 90,000 installed horsepower. The pipeline runs from the El Caracol compression station in Reynosa, Tamaulipas to the Los Indios compression station in San Fernando, Tamaulipas.



San Isidro-Samalayuca Pipeline	Pipeline which consists of approximately 23 km with a natural gas transportation capacity of 1,135 mmcf (11.8 mmthd) and a 71,000 installed horsepower compression station, located in the state of Chihuahua.
SAP	Systems, Applications & Products in Data Processing.
Sásabe-Puerto Libertad-Guaymas Pipeline	First segment of the Sonora Pipeline which consists of approximately 505 km of a 36-inch diameter pipeline with a natural gas transportation capacity of 812 mmcf (8.0 mmthd). The pipeline includes two sections in Sonora: the 220-km Sásabe-Puerto Libertad section and the 285-km Puerto Libertad-Guaymas section.
SASB	Sustainability Accounting Standards Board.
Scotiabank	Scotiabank Inverlat, S.A. Institución de Banca Múltiple, Grupo Financiero Scotiabank Inverlat.
SCT	Ministry of Communications and Transportation (Secretaría de Comunicaciones y Transportes).
SEFORE	A long-term savings program focused on retirement that IEnova offers its employees. It enables them to plan and manage a financial retirement goal.
SEMAR	Ministry of the Navy (Secretaría de Marina).
SEMARNAT	Ministry of the Environment and Natural Resources (Secretaría del Medio Ambiente y Recursos Naturales).
Semco	Semco Holdco, S. de R.L. de C.V.
Sempra Energy or Sempra	Sempra Energy, a California corporation and the Company's indirect parent company.
SENER	Ministry of Energy (Secretaría de Energía).
Shell	Shell México Gas Natural, S. de R.L. de C.V.
SMEs	Small- and medium-sized companies.
Sonora Pipeline	Natural gas pipeline which consists of approximately 835 km, with a capacity of 812 mmcf (8.0 mmthd) for the first segment and 510 mmcf (5.3 mmthd) for the second segment, located in the states of Sonora and Sinaloa. The first segment is the Sásabe-Puerto Libertad-Guaymas Pipeline, and the second segment is the Guaymas-El Oro Pipeline; both segments are interconnected to each other and with the Ramal Empalme Pipeline.
South Texas-Tuxpan Pipeline	Marine pipeline that was developed as a joint venture with TC Energy, which consists of approximately 800 km, with a natural gas transportation capacity of 2,600 mmcf (27 mmthd) and a compression station. IEnova holds a 40% stake in the joint venture and TC Energy holds a 60% stake.
TC Energy	TC Energy Corporation, formerly TransCanada Corporation.
tCH ₄	Tons of methane.
tCO ₂ e	Tons of carbon dioxide equivalent.
Tecnológico de Monterrey	Instituto Tecnológico y de Estudios Superiores de Monterrey.
Tepezalá Solar	Photovoltaic solar power plant with a capacity of approximately 100 MWAC, located in the state of Aguascalientes.
Termoeléctrica de Mexicali or TDM	Termoeléctrica de Mexicali, S. de R.L. de C.V., a 625 MW natural-gas-fired, combined-cycle power generation facility located in the state of Baja California.
TGN	Transportadora de Gas Natural de Baja California, S. de R.L., one of IEnova's natural gas pipelines.
TGN Pipeline	Pipeline which consists of approximately 45 km of a 30-inch diameter pipeline with a capacity of 940 mmcf (9.8 mmthd) and a 9,600-installed horsepower compression station, located in Baja California.



The Climate Registry	NGO in the US that measures and verifies international carbon standards.
tN ₂ O	Tons of nitrous oxide.
Topolobampo Terminal	Refined products storage terminal located in Sinaloa, which is currently under construction. The project will have a capacity of 1,180,000 bl.
Total	Total S.A.
Trafigura	Trafigura México, S.A. de C.V., a logistics and raw materials company with which IEnova has established a joint venture.
Trina Solar	Trina Solar Limited.
TRIR	Total Recordable Incident Rate = Number of total recordable incidents x 200,000/hours worked.
Turnover Rate	Number of cuts in a year / Total number of employees.
USD\$	US dollars.
Valero	Valero Energy Corporation.
Valle de México Terminal	Refined products storage terminal located in the vicinity of Mexico City, currently under construction. The project will have a capacity of approximately 650,000 bl.
VAT	Value Added Tax.
Ventika	Includes two neighboring wind parks, Ventika I and Ventika II, with 126 MW per park, for a total capacity of 252 MW, with 84 3-MW turbines. Located in the state of Nuevo León, Ventika I and Ventika II operate as a single park.
Veracruz Terminal	Refined products storage terminal located in the state of Veracruz, currently under construction. The project will have a capacity of approximately 2,100,000 bl.
WRI	World Resources Institute.
WWTP	Wastewater Treatment Plants.

